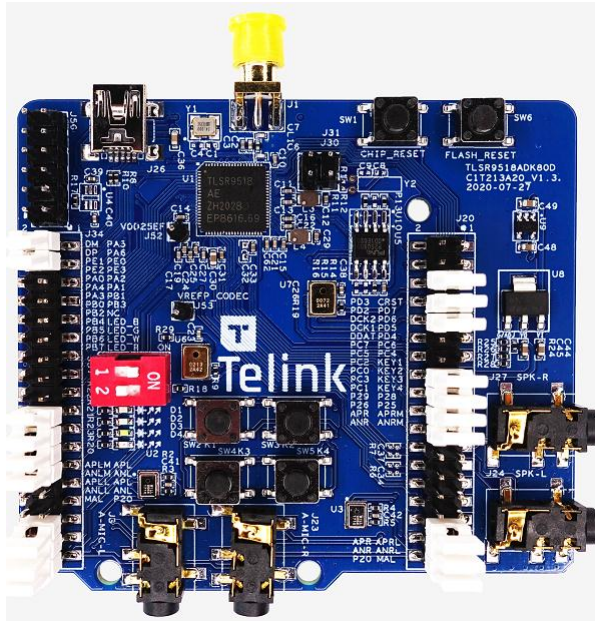


Telink Thread Demo Quick Start Guide

Hardware

- B91 Development board



Hardware

■ Telink Burning Board

- ▣ Use USB to connect PC and the Telink Burning Board, when the LED is off, the connection is successful.
 - There is no need to install the driver.
- ▣ Use dupont wire to connect Telink Burning Board and DUT.
 - 3V3 -> 3V3(DUT)
 - SWM -> SWS(DUT)
 - GND -> GND(DUT)



Hardware

- USB to TTL serial cable

- ▣ Connect the DUT and USB-TTL together.

- ▶ TXD -> PB3 (DUT)
 - ▶ RXD -> PB2 (DUT)
 - ▶ GND -> GND (DUT)

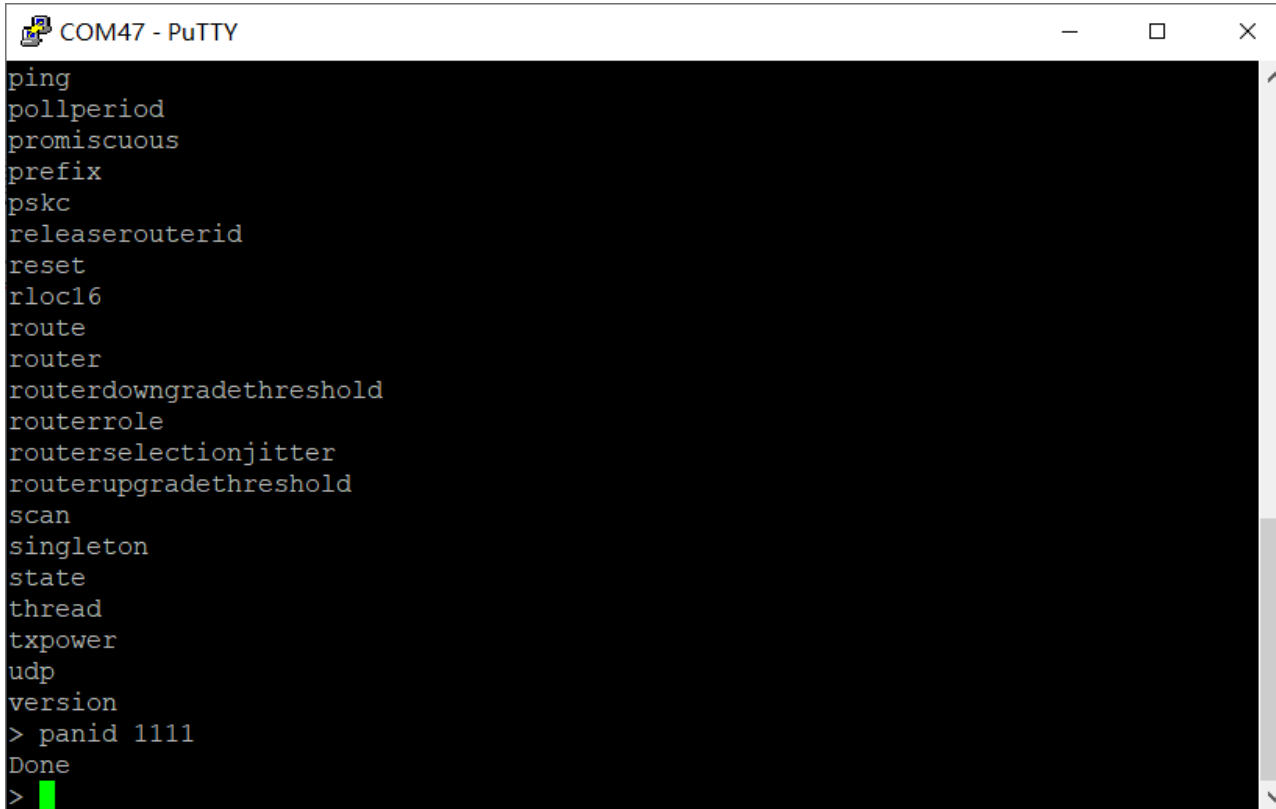


- Refer to “[Burning and Debugging Tools for all Series](#)” to download the binary file to the board.

Form Thread Network

- Take forming two nodes network as example , power on the node A and run the following commands:

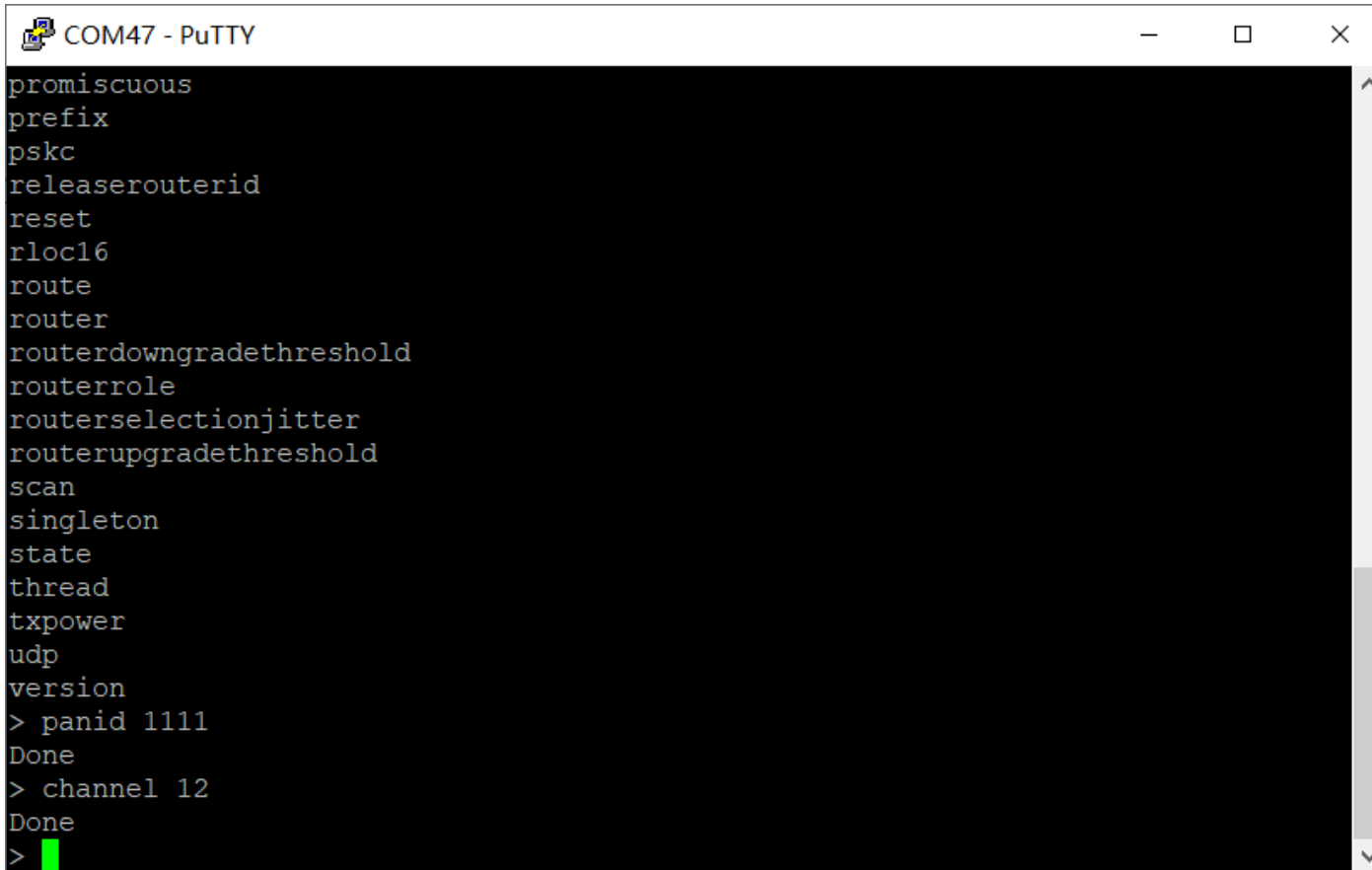
- ▣ panid 1111



```
COM47 - PuTTY
ping
pollperiod
promiscuous
prefix
pskc
releaserouterid
reset
rloc16
route
router
routerdowngradethreshold
routerrole
routerselectionjitter
routerupgradethreshold
scan
singleton
state
thread
txpower
udp
version
> panid 1111
Done
>
```

Form Thread Network

▣ channel 12



```
COM47 - PuTTY
promiscuous
prefix
pskc
releaserouterid
reset
rloc16
route
router
routerdowngradethreshold
routerrole
routerselectionjitter
routerupgradethreshold
scan
singleton
state
thread
txpower
udp
version
> panid 1111
Done
> channel 12
Done
>
```

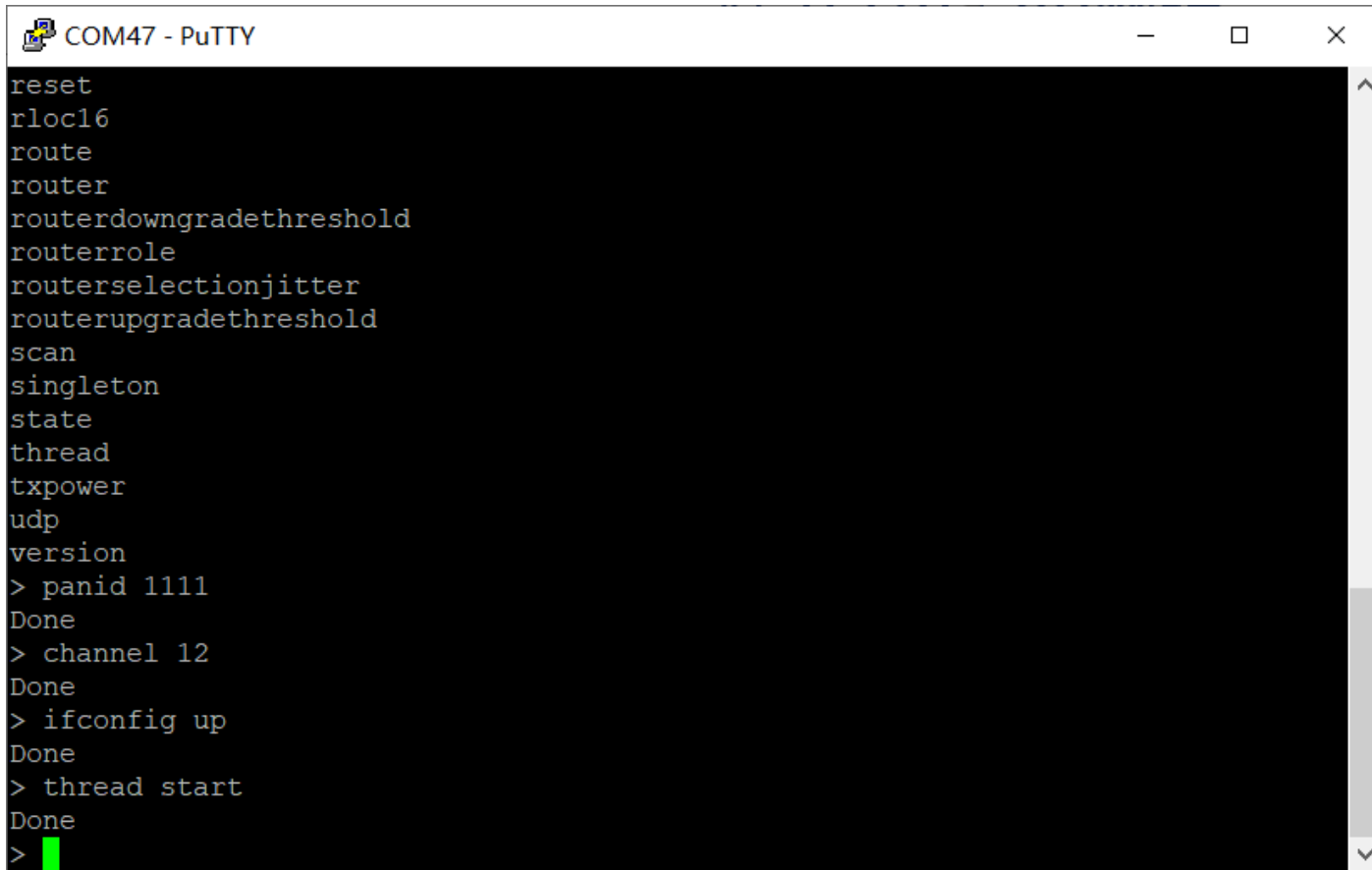
Form Thread Network

- ▣ ifconfig up

```
COM47 - PuTTY
pskc
releaserouterid
reset
rloc16
route
router
routerdowngradethreshold
routerrole
routerselectionjitter
routerupgradethreshold
scan
singleton
state
thread
txpower
udp
version
> panid 1111
Done
> channel 12
Done
> ifconfig up
Done
>
```

Form Thread Network

- ▣ thread start

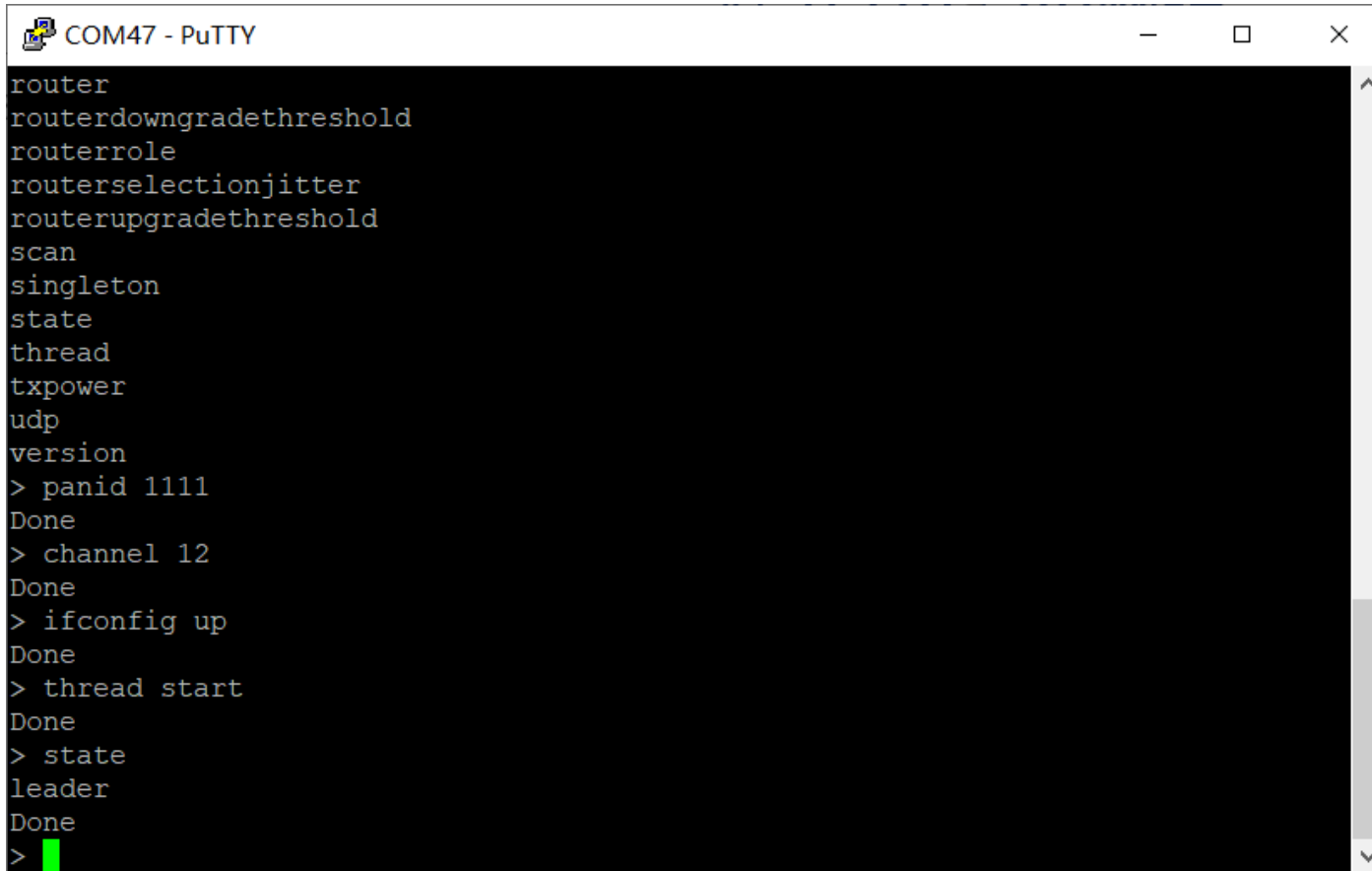


```
COM47 - PuTTY
reset
rloc16
route
router
routerdowngradethreshold
routerrole
routerselectionjitter
routerupgradethreshold
scan
singleton
state
thread
txpower
udp
version
> panid 1111
Done
> channel 12
Done
> ifconfig up
Done
> thread start
Done
>
```


Form Thread Network

▣ state

■ Now we know that node A has become the Leader.



```
COM47 - PuTTY
router
routerdowngradethreshold
routerrole
routerselectionjitter
routerupgradethreshold
scan
singleton
state
thread
txpower
udp
version
> panid 1111
Done
> channel 12
Done
> ifconfig up
Done
> thread start
Done
> state
leader
Done
>
```

Form Thread Network

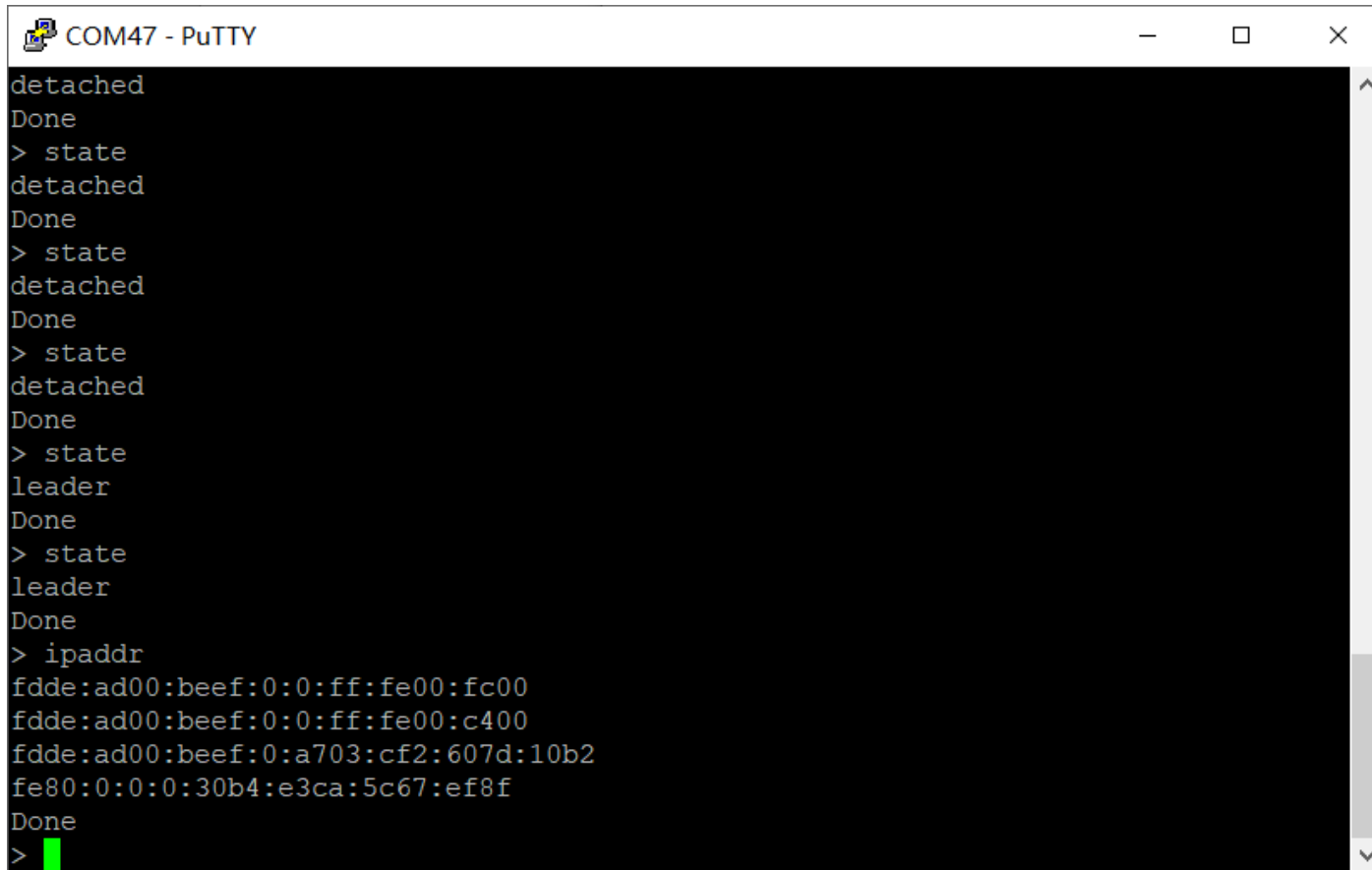
- Power on the node B, run the same commands as node A, we can see that first the node B becomes to the child, then change to the router after a few seconds:



```
COM76 - PuTTY
> panid 1111
Done
> channel 12
Done
> ifconfig up
Done
> thread start
Done
> state
child
Done
> state
child
Done
> state
child
Done
> state
child
Done
> state
router
Done
>
```

Form Thread Network

- Use the command “ipaddr” to get the IP addresses of node A.



```
COM47 - PuTTY
detached
Done
> state
detached
Done
> state
detached
Done
> state
detached
Done
> state
leader
Done
> state
leader
Done
> ipaddr
fdde:ad00:beef:0:0:ff:fe00:fc00
fdde:ad00:beef:0:0:ff:fe00:c400
fdde:ad00:beef:0:a703:cf2:607d:10b2
fe80:0:0:0:30b4:e3ca:5c67:ef8f
Done
>
```

