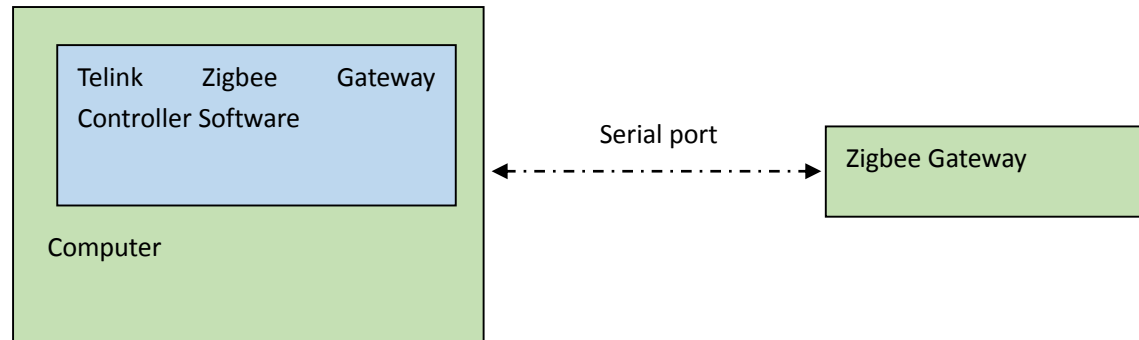


1. Brief

This document is the user manual for telink zigbee gateway controller software, and note that only the generic step is shown here, please refer to “AN_17110600-E2_Telink Zigbee 3.0 SDK Guide” for more information.

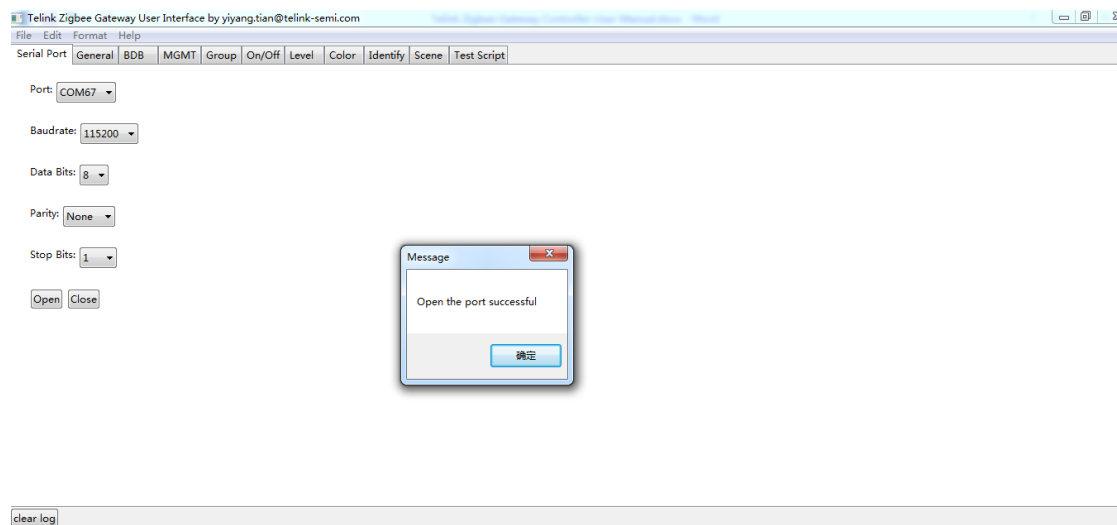
2. System Architecture



3. Step-by-Step Guide

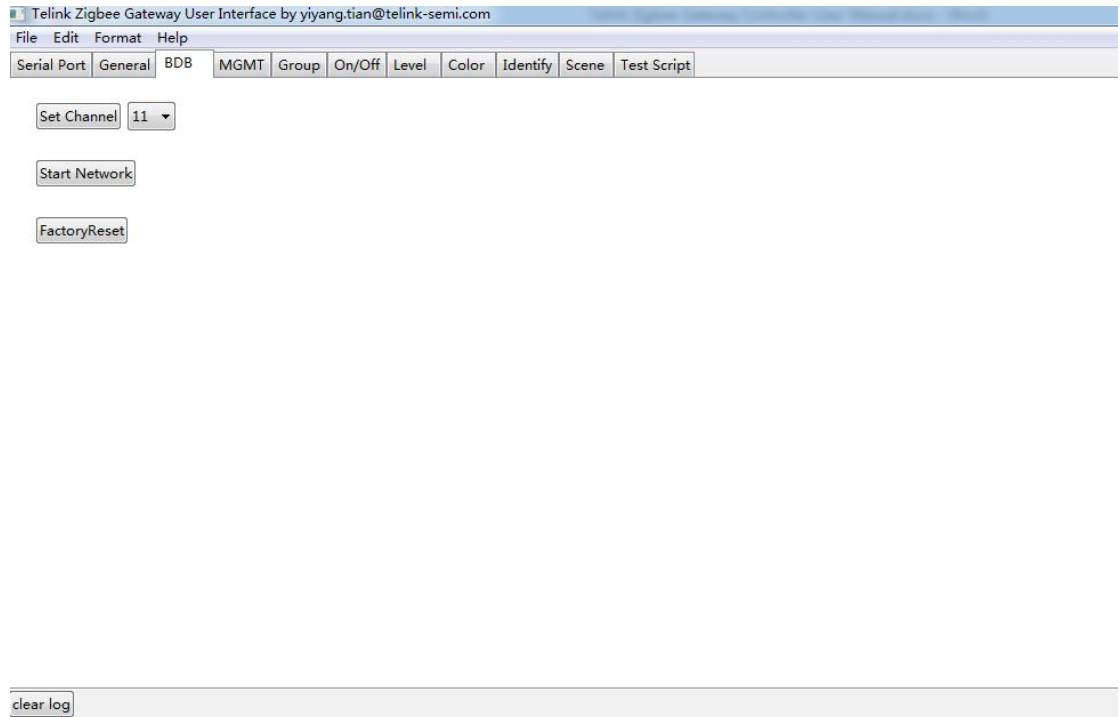
Step 1: Open the port

- 1) Select the port number, and other options can use the default value.
- 2) Click on the “Open” button and open the port.



Step 2: Set the channel

- 1) Switch to the BDB page
- 2) Select a channel you want to use and click the “Set Channel” button.



Step 3: Start the network

- 1) Click the "Start Network" button to start the network

Step 4: Set the permit join interval

- 1) Switch to the MGMT page
- 2) Enter the address and interval
- 3) Click the "Permit Join" button

Telink Zigbee Gateway User Interface by yiyang.tian@telink-semi.com

File Edit Format Help

Serial Port General BDB MGMT Group On/Off Level Color Identify Scene Test Script

Permit Join addr interval

Get Joined Nodes

IEEE Req TargetAdc nwkAddrI SINGLE StartIndex

Addr Req TargetAdc ieeeAddrI SINGLE StartIndex

Active Req TargetAdc nwkAddrI

Node Req targetAdd NwkAddrI

Simple Req targetAdd NwkAddrI EndPoint

Lqi Req DstAddr StartIndex

Bind Req SrcAddr SrcEndPoi ClusterID GROUP DstAddr DstEndPoi

UnBind Req SrcAddr SrcEndPoi ClusterID GROUP DstAddr DstEndPoi

MGMT Bind Req DstAddr StartIndex

MGMT Leave Req DstAddr DevExtAdc ☐ REJOIN ☐ REMOVE CHILDREN

NWK Update Req DstAddr NwkMana ScanChan ScanDurat ScanCount

clear log

Step 5: Power on the Zigbee device to join the network before the interval is expired, and now you can use other commands to control the device.