



# Main Chip

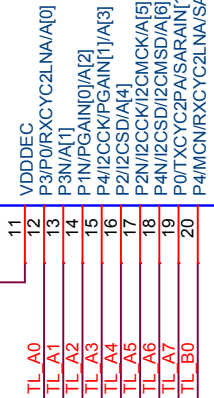
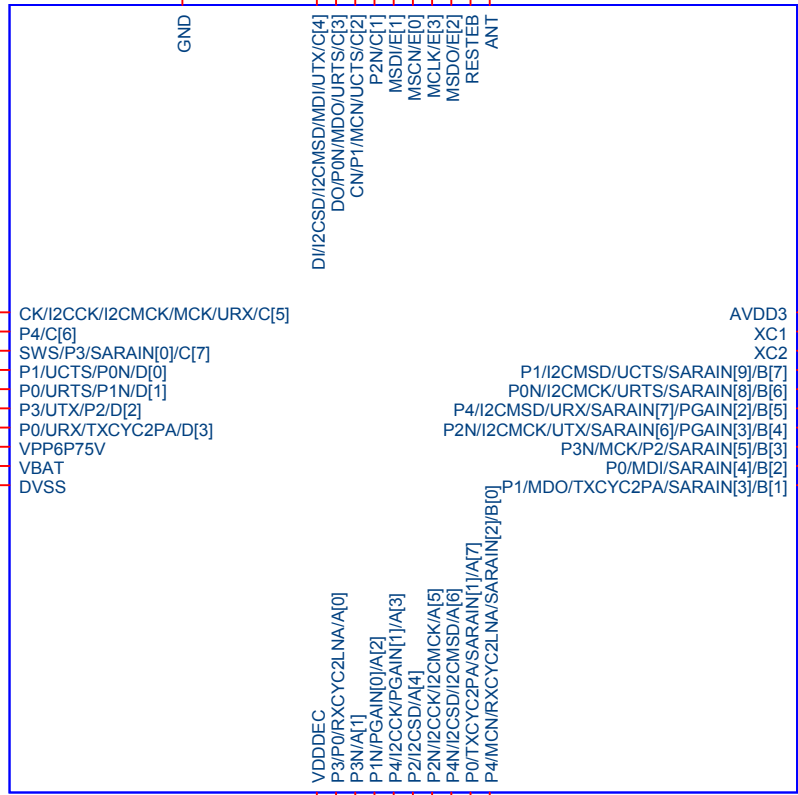
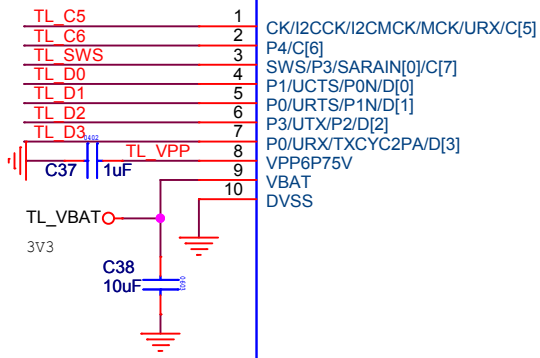
>>TL\_C1  
>>TL\_C2  
>>TL\_C5  
>>TL\_C6  
>>TL\_B0  
>>TL\_B1  
>>TL\_B2  
>>TL\_B3

>>TL\_B6  
>>TL\_B7  
>>TL\_A6  
>>TL\_A7  
>>TL\_RST  
>>TL\_B4\_UTX  
>>TL\_B5\_URX  
>>TL\_C3\_SPI\_DO  
>>TL\_C4\_SPI\_DI

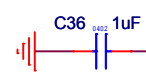
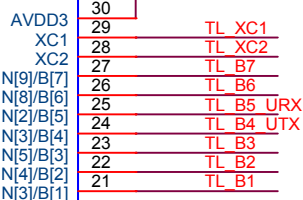
>>TL\_D0  
>>TL\_D1  
>>TL\_D2  
>>TL\_D3

>>TL\_A1  
>>TL\_A2  
>>TL\_A3  
>>TL\_A4

>>TL\_VPP  
>>TL\_SWS  
>>TL\_A0  
>>TL\_A5

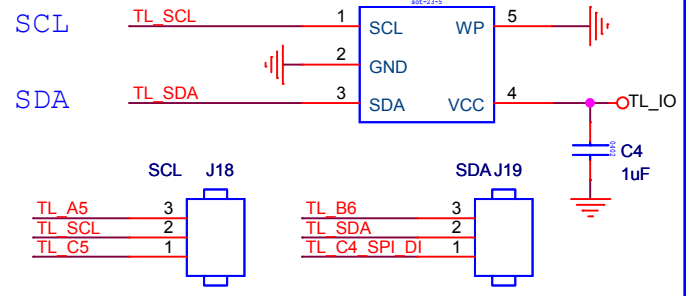


U1  
TLRS8369ET40

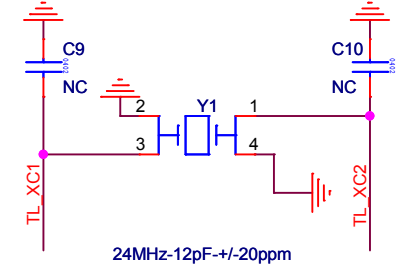


## EEPROM

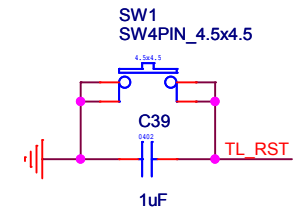
U3  
FM24C02B



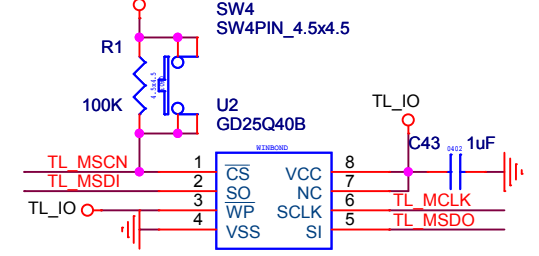
## Crystal

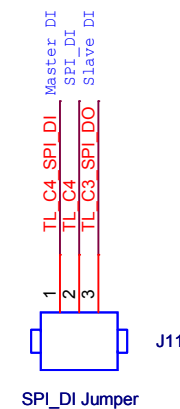
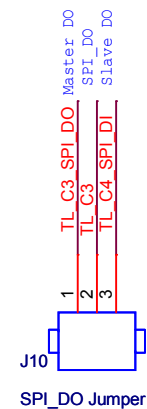
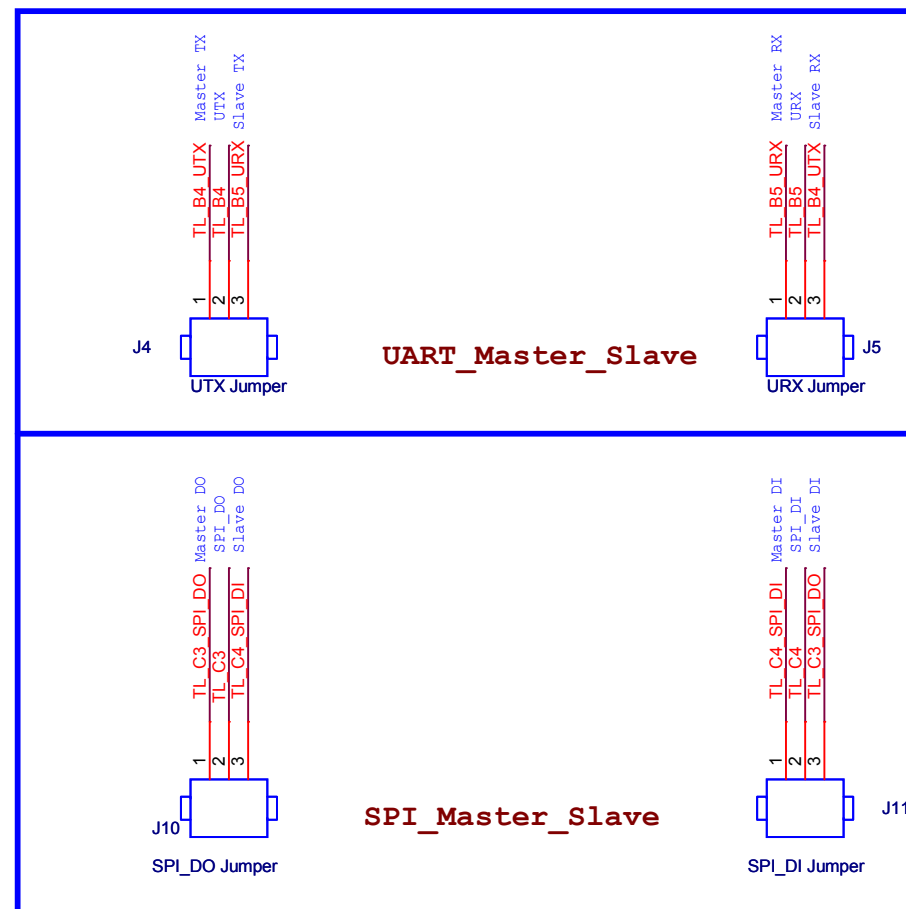
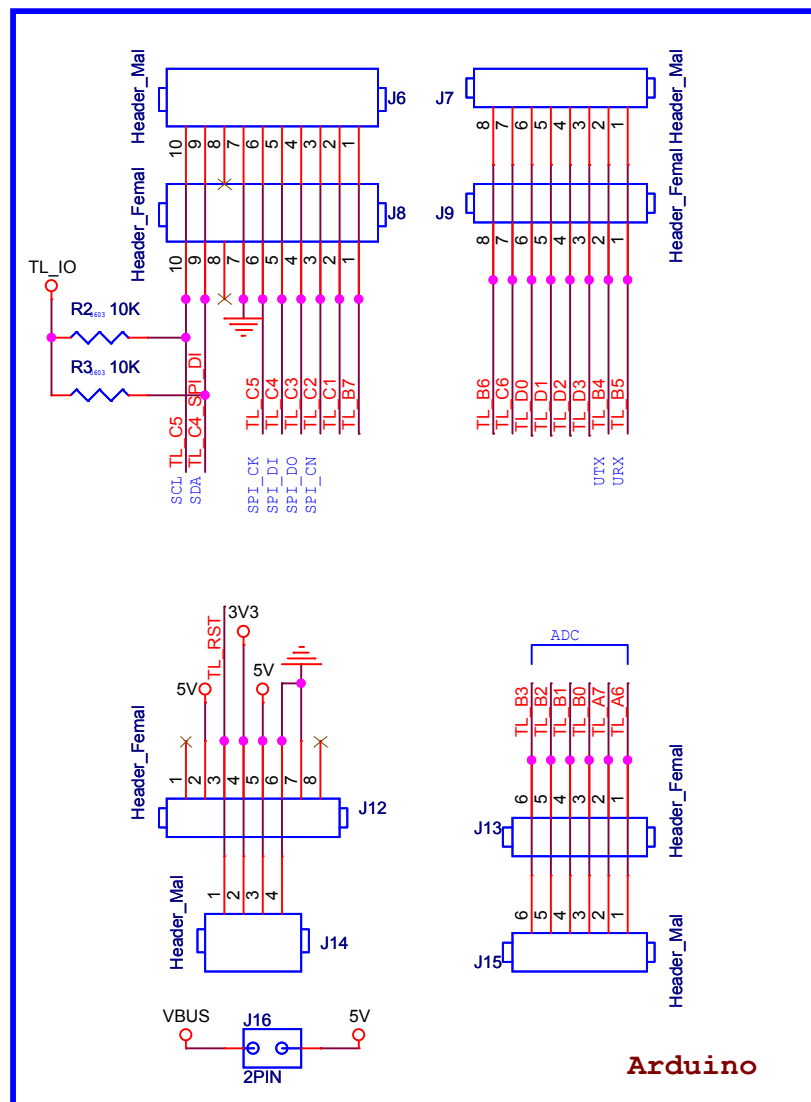


## RESET

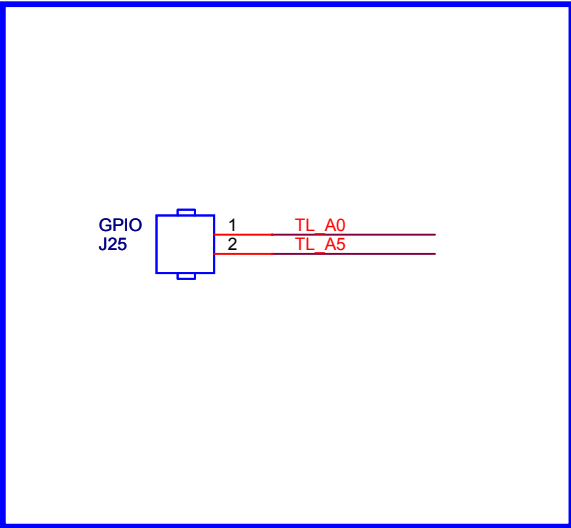
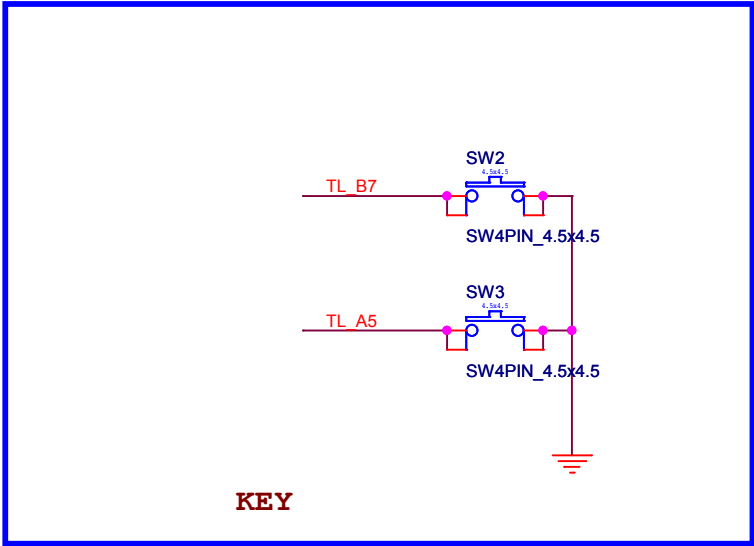
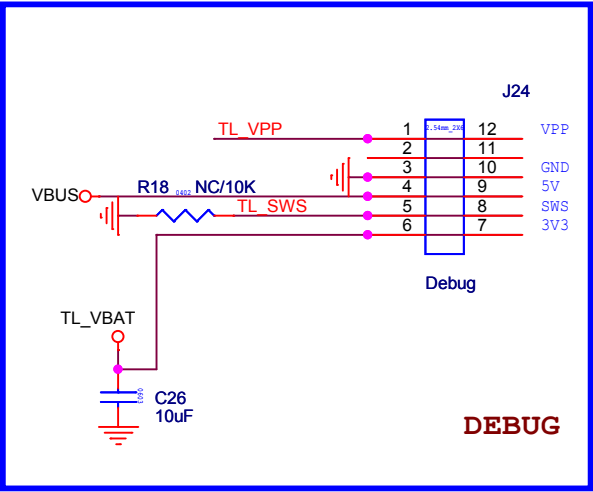
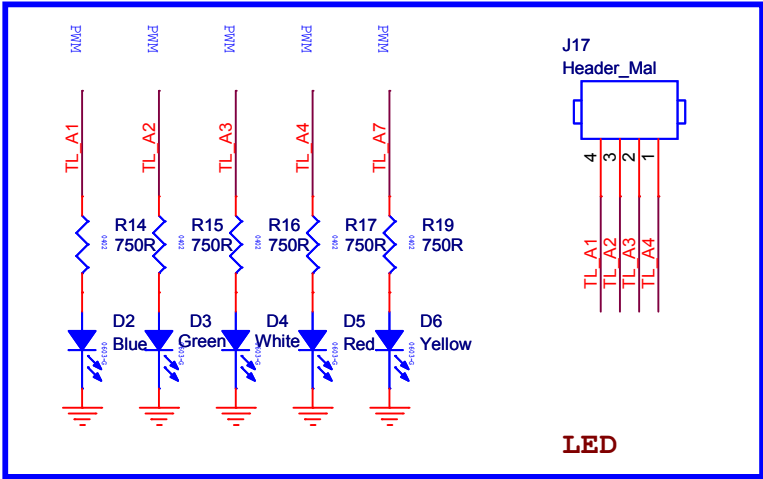


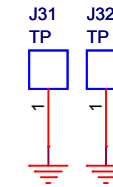
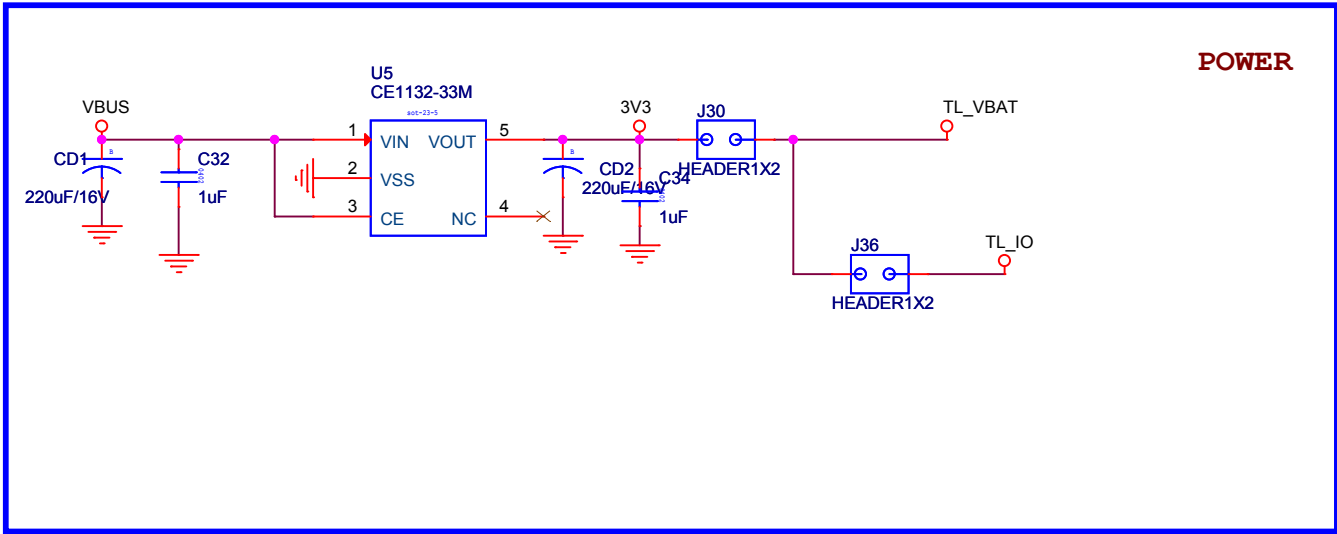
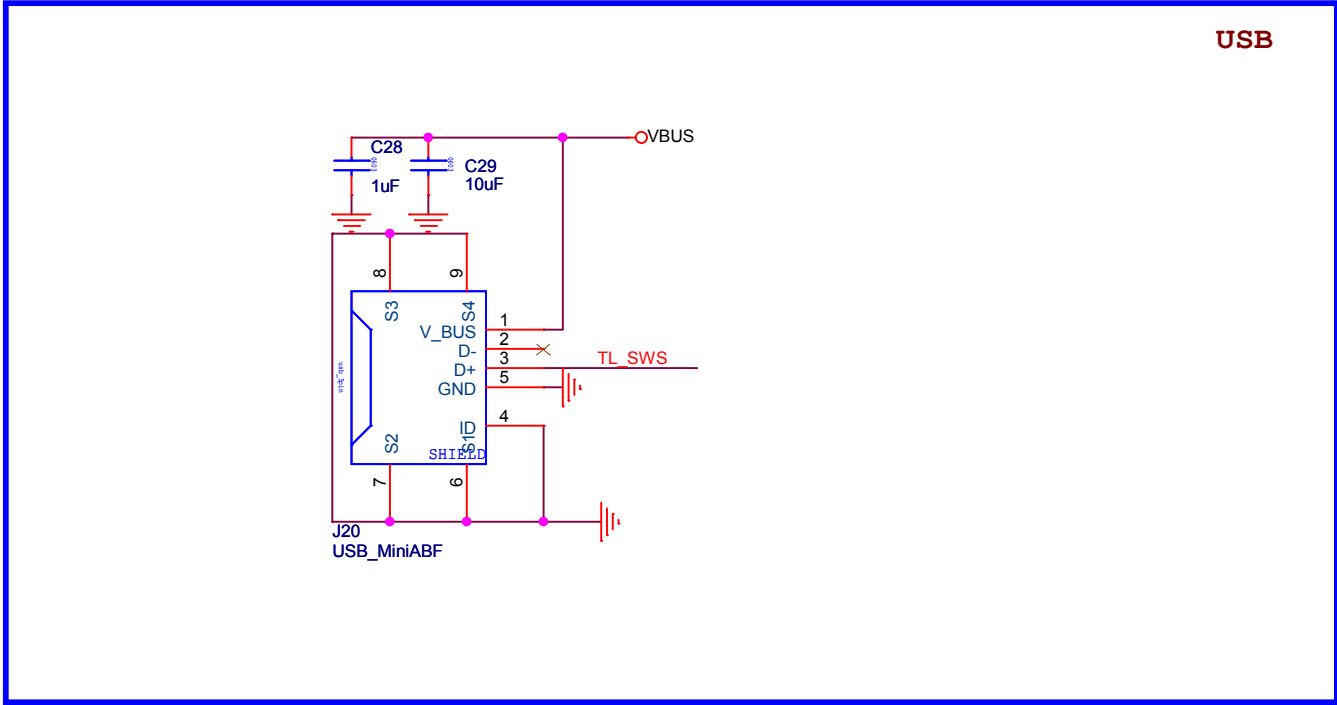
## Flash





>>TL\_A1  
>>TL\_A2  
>>TL\_A3  
>>TL\_A4  
  
>>TL\_VPP  
>>TL\_SWS  
>>TL\_A0  
>>TL\_A5  
  
>>TL\_A7  
  
>>TL\_B7





Title			
Telink-Semi			
Size	Document Number		Rev
A4	C1T144A30		V1.3
Date:	Monday, December 09, 2019	Sheet	5 of 5