



Telink
TELINKSEMICONDUCT

Telink Qualification Report:- TLR8355F512ET32

Ver 1.0

2020/12/8

Brief:

This document lists reliability test conditions and result of specified product, Guarantee the quality of products through relevant reliability tests.



**Published by
Telink Semiconductor**

**Bldg 3, 1500 Zuchongzhi Rd,
Zhangjiang Hi-Tech Park, Shanghai, China**

**© Telink Semiconductor
All Right Reserved**

Legal Disclaimer

Telink Semiconductor reserves the right to make changes without further notice to any products herein to improve reliability, function or design. Telink Semiconductor disclaims any and all liability for any errors, inaccuracies or incompleteness contained herein or in any other disclosure relating to any product.

Telink Semiconductor does not assume any liability arising out of the application or use of any product or circuit described herein; neither does it convey any license under its patent rights, nor the rights of others

The products shown herein are not designed for use in medical, life-saving, or life-sustaining applications. Customers using or selling Telink Semiconductor products not expressly indicated for use in such applications do so entirely at their own risk and agree to fully indemnify Telink Semiconductor for any damages arising or resulting from such use or sale.

Information:

For further information on the technology, product and business term, please contact Telink Semiconductor Company (www.telink-semi.com).

For sales or technical support, please send email to the address of:

telinknsales@telink-semi.com

telinknsupport@telink-semi.com



Revision History

Version	Major Changes	Date	Author
1.0	Initial release	2020/12/08	Jim Yao



CONTENTS

1. Reliability test summary	4
2. Introduction	5
3. Reliability.....	5
3.1. Sample preparation Flow	5
3.2. Life test	5
3.2.1. Test flow	5
3.2.2. Test Criteria	6
3.2.3. Failure Rate Calculation and Test Result	6
3.3. Environment Test	8
3.3.1. Test Flow.....	8
3.3.2. Test Condition and Time.....	9
3.3.3. Test Criteria and Result	11
3.4. ESD test	11
3.5. Latch-up Test	12
4. Conclusion	13



Reliability Qualification Report for TL8R8355F512ET32

1. Reliability test summary

Stress	Total Sample size	Number Of Lots	Accept Criteria	Test Method	Test Conditions	Comments
HTOL	77	3	0 Fails	JESD22-A108,JESD85	125°C, 1.1VCC, 1000hrs	
Preconditioning	77*items	1	0 Fails	JESD22-A113	Pls refer to following split tables	Steps: SAM-TC-Baking-Soaking-Reflow-SAM
Unbiased HAST with Precon	77	1	0 Fails	JESD22-A118	130°C/85%RH for 96 hrs	
PCT with Precon	77	1	0 Fails	JESD22-A102	121°C 29.7 psia, 100% RH for 96 hrs	
TCT with Precon	77	1	0 Fails	JESD22-A104	-65°C to 150°C for 500 cycles	
HTSL with Precon	77	1	0 Fails	JESD22-A103	+150°C for 1000 hrs	
ESD-HBM	Pin combination*3	1	0 Fails	JESD22A-114	2KV / -2KV	
ESD-MM	Pin combination*3	1	0 Fails	JESD22A-115	200V / -200V	Just Internal use
ESD-CDM	3	1	0 Fails	JESD22C-101	500V / -500V	
Latch-Up	6	1	0 Fails	JESD78	100mA / -100mA	

Moisture Sensitivity Level Test flow&Condition:

Electrical test → SAT → TC (-40 °C (or lower) ~ 60 °C (or higher) for 5 cycles) →

Bake(125°C,24Hrs)→ Soaking Level 3 (30°C,60%RH,192 Hrs)→ Reflow(245°C(- 5°C)

/ 250°C(-5°C),3 Cycles) → Electrical Test → SAT



2 Introduction

In order to meet the most stringent market demands for high quality and reliability semiconductor components, Telink maintains a strict reliability program in all products. The purpose of this report is to give an overview of the reliability status of TL8R8355F512ET32. Accelerated tests are performed on product, and then the results are extrapolated to standard operating conditions in order to calculate and estimate the component's failure rate.

3 Reliability

Many stress tests have been standardized in such documents as JESD471. From these standards, Telink has selected a series of tests to ensure that reliability targets are being met. These tests, including life test, environment test, ESD test and latch-up test, are discussed in the following sections.

3.1 Sample preparation Flow

CP → Assembly QFN32 → FT → Sampling Good Parts for Reliability test

3.2 Life test

The purpose of the High temperature operating life (HTOL) is to estimate the infant mortality failure rate that occurs within the 10 years of normal device operation by accelerating infant mortality failure mechanisms. The oven temperature for the EFR test is 125°C. Testing is performed with dynamic signals applied to the device, and the voltage is 1.1*V_{int}.

3.2.1 Test flow

HTOL Test Flow

B/I 168Hrs(125°C, 1.1*V_{int}) → Electrical Test → B/I 500Hrs(125°C, 1.1*V_{int}) →
Electrical Test → B/I 1000Hrs(125°C, 1.1*V_{int}) → Electrical Test



3.2.2 Test Criteria

Test Item	Reference Standard	Test Condition	Prediction Duration	Pass Criteria	
HTOL 1000Hrs	JESD22-A108	Vcc=1.1*Vint Ta =125°C	1~10 Year	Confidence level 60%	<=36.64(FIT)
				Confidence level 90%	<=92.08(FIT)

3.2.3 Failure Rate Calculation and Test Result

The life test is performed for the purpose of accelerating the probable electrical and physical weakness of devices subjected to the specified conditions over an extended time period.

Most integrated circuit failure mechanisms are based on physical or chemical reactions. These reactions are accelerated by temperature and can be modeled using the Arrhenius equation. The acceleration factor (AF) between any two temperatures may be calculated as follows:

:

$$AF_{(T_1-T_2)} = e^{\frac{Ea}{k}(\frac{1}{T_1} - \frac{1}{T_2})}$$

Parameter	Description	Value
E	natural log	/
Ea	activation energy in electron volts	0.7 eV
k	Boltzman's constant	8.62 x 10 ⁻⁵ eV/K
T1	use temperature	55°C
T2	stress temperature	125°C
AF	acceleration factor	77.823

Next, a Chi square approximation of the mature life failure rate can be made using the following information:

$$\text{Failure rate } (X^2) = \frac{X^2_{(2f+2,\alpha)}}{2*n*T*AF}$$



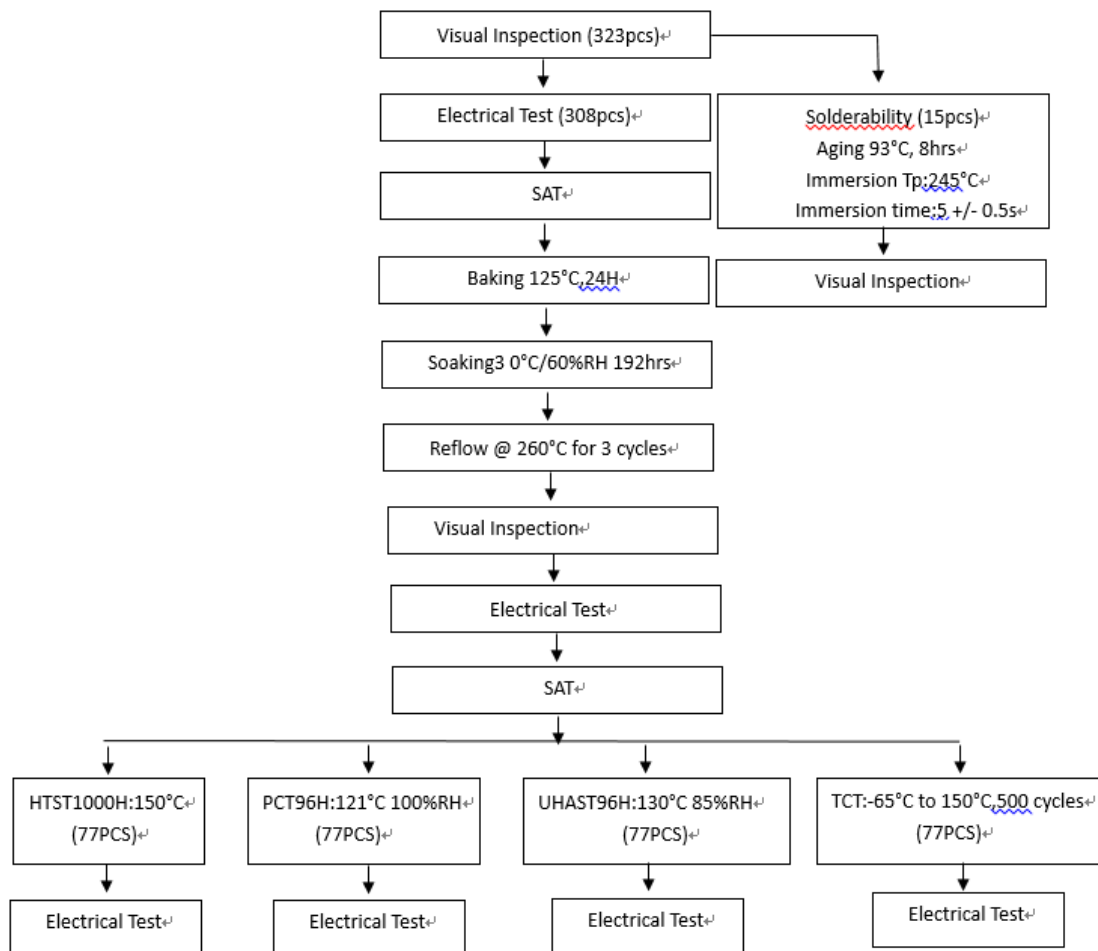
Parameter	Description	Value	
f	number of failures	0	
α	1 – confidence level	Confidence level 60%	Confidence level 90%
n	quantity tested	231	
T	test duration (hours)	1000Hr	
AF	acceleration factor	108.249	
MTTF	Mean Time To Failure	2.729*10 ⁷ Hr	1.086*10 ⁷ Hr
FIT	Failure rate	36.64	92.08



3.3 Environment Test

The purpose of environmental test is to evaluate the ability of semiconductor device to withstand the temperature stress, humidity stress, electrical stress or any combination of these. It can reveal not only the package quality issue but also the possible error in wafer process or chip design interacting with the assembly process.

3.3.1 Test Flow





3.3.2 Test Condition and Time

3.3.2.1 Moisture Sensitivity Test

The purpose of moisture sensitivity test is to identify the classification level of nonhermetic solid state surface mount devices(SMDS) that are sensitive to moisture induced stress so that they can be properly packaged, stored, and handled to avoid subsequent thermal and mechanical damage during the assembly solder reflow attachment and/or repair operation.

Test Item	Test Condition (Level III)	Test Time
Temp. Cycle	-40°C ~ 60°C	5Cycles
Bake	125°C	24Hrs
Unbiased Temp-Humidity Soak	30°C, 60%R.H.	192Hrs
Convection Reflow	<div><p>IR REFLOW PROFILE FOR 260 - 0 / +5°C (Pb-Free)</p><p>(a) Preheat Temp. = 60~120 seconds Max. (b) Temp. maintained above 217°C = 60~150 seconds (c) Temp. maintained above 230°C = 30~60 seconds (d) Temp. maintained above 255°C = 20~40 seconds (e) Peak Temp. Range = 260(-0/+5)°C & Max. 20 seconds P.S. Time 25°C to Peak Temp. = 8 minutes Max.</p></div>	3Cycles



3.3.2.2 High-Temperature Storage Life Test

The high-temperature storage life test measure device resistance to a high temperature environment that simulates a storage environment. The stress temperature is set to 150°C in order to accelerate the effect of temperature on the test samples. In the test, no voltage bias is applied to the devices.

Test Item	Test Condition	Test Time
HTST	150 °C	1000Hrs

3.3.2.3 Pressure Cooker Test

The pressure cooker test is an environment test that measures device resistance to moisture penetration and the effect of galvanic corrosion. The stress conditions for the pressure cooker are 121°C,100% relativity humidity, and 2.05atm pressure. Samples of surface mount devices are subjected to preconditioning and a final electrical test prior to the pressure cooker test

Test item	Test Condition	Test Time
PCT	121 °C ,100%RH,2.05atm	96Hrs

3.3.2.4 Unbiased Highly Accelerated temperature and humidity Stress Test

The unbiased highly accelerated stress test is performed for the purpose of evaluating the reliability of non-hermetically packaged solid-state devices in humid environments. It employs temperature and humidity under non-condensing conditions to accelerate. The stress condition of the HAST are 130 °C ,85% relativity humidity,2.3atm pressure. Samples of surface mount devices are subjected to preconditioning and a final electrical test prior to the highly-accelerated temperature and humidity stress test.

Test item	Test Condition	Test Time
uHAST	130 °C ,85%RH,2.3atm,unbiased	96Hrs

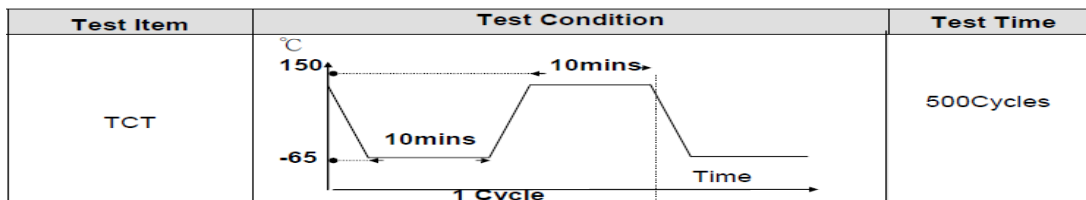
3.3.2.5 Temperature Cycling Test

The purpose of temperature cycling test is to study the effect of thermal expansion mismatch among the different components within a specific die and package system. The cycling test system has a cold dwell at -65°C and a hot dwell 150°C, and it employs a circulating air environment to ensure rapid stabilization at a specified temperature. During temperature cycling test, devices are inserted into the cycling test system and held at cold dwell for 10 minutes, then the devices are heated to hot dwell for 10



minutes. One cycle includes the duration at both extreme temperature and the two transition times.

The transition period is less than one minutes at 25°C Samples of surface mount devices must first undergo preconditioning and pass a final electrical test prior to the temperature cycling test.



3.3.3 Test Criteria and Result

The following table shows the test results and reference standard of environmental test. The test status and results of TL8R8355F512ET32 are also presented in the table. All pass from these test results mean that Telink products are much more endurable in most of their service environment.

Test Item	Reference Standard	A/R Criteria	Failure/S.S	Status	Failure Mode
Moisture Sensitivity	JESD22-A113	0/1	0/308*1	Pass	NA
HTST	JESD22-A103	0/1	0/77*1	Pass	NA
TCT	JESD22-A104	0/1	0/77*1	Pass	NA
PCT	JESD22-A102	0/1	0/77*1	Pass	NA
uHAST	JESD22-A118	0/1	0/77*1	Pass	NA

3.4 ESD test

Electrical discharge into semiconductor product is one of the leading causes of devices failure in the customer’s manufacturing process. Telink performs the ESD test to ensure that the performance of TL8R8355F512ET32 will not be degraded to an unacceptable level by exposure to a succession of electrostatic discharge. The test methods and test results are show in following table:

Test Item	Test Method			Fail/Pass
	Reference Standard	Criteria	Sample	
HBM	JESD22A-114	+/-2KV	3ea	0/3
CDM	JESD22C-101	+/-500V	3ea	0/3



3.5 Latch-up Test

CMOS products can be prone to over-voltage exceeding the maximum device rating if the parasitic p-n-p-n SCRs (Silicon-controlled rectifier) are improperly biased. When the SCR turn on, it draws excessive current and causes products being damaged by thermal runaway. The following table shows the latch-up test method and the test result of no failure.

Latch-Up	Test Item	Mode	Spec	Value	Sample	Fail/Pass
	I-Test	Positive	+100mA	+100mA	3ea	0/3
		Negative	-100mA	-100mA	3ea	0/3
	V _{supply} Over Voltage	Positive	1.5Vmax/MSV	5.445V	3ea	0/3
				2.97V		
				2.31V		
				1.98V		



4 Conclusion

Reliability test is to ensure the ability of a product in order to perform a required function under specific conditions for a certain period of time. Through those tests, the devices of potential failure can be screened out before shipping to the customer. At the same time, the test results are fed back to process, design and other related departments for improving product quality and reliability.

According to the life time test data, the long-term 1000Hrs failure rate (=the normal operation 1-10 year) of TL8355F512ET32 is equal to 36.64 FITS at $T_a=125^{\circ}\text{C}$ and $V_{cc}=3.63\text{V}$ with 60% confidence level and 92.08 FITS at $T_a=125^{\circ}\text{C}$ and $V_{cc}=3.63\text{V}$ with 90% confidence level. The results of environmental test, ESD test and latch-up test also ensure that the TL8355F512ET32 is manufactures under a precise control of quality by Telink and its subcontractors. Thus, this experiment based on the Telink reliability test standard for above test items can all pass.

With the extensive research and development activities and the cooperation of all departments, Telink continuously sets and maintains higher standard of quality and reliability to satisfy the future daman of its customers.